

I live in the most southern region of Portugal, the Algarve and after many years of painting, I felt that it was time to do something meaningful with my art. So, I decided to combine two things close to my heart – being creative and helping abandoned dogs.

**Together we can make a difference!**

*Please be aware that actual colours may vary slightly due to photographic lighting sources or monitor settings.*



This month's painting is from another of my four art collections, "Hints of Iberia" which has proved very popular. The collection started coincidentally when replacing a large painting in our house. We wanted something simple and colourful, combining Portuguese tradition with a modern hint. I used many layers of tile pattern stencils on the canvas and added small crystal stones. I fell in love with the result and now there's a few more paintings in this genre. You can see the available paintings at [www.tinamcevoy.de/hints-of-iberia/](http://www.tinamcevoy.de/hints-of-iberia/).

"Alma Portuguesa" is a small canvas, for display on a furniture piece or a small wall. The turquoise and lime green colour fits well with the brown tones of any wood. In the centre of the painting is a small turquoise crystal.

The canvas edge is painted black so there's no need for a frame... however, two nice framing options come to mind: a floating frame, or to fit the canvas in a larger deep edge frame on a white background. Silver and pewter are other colours that would suit the painting.

**Title:**

**Alma Portuguesa**

**Dimensions:**

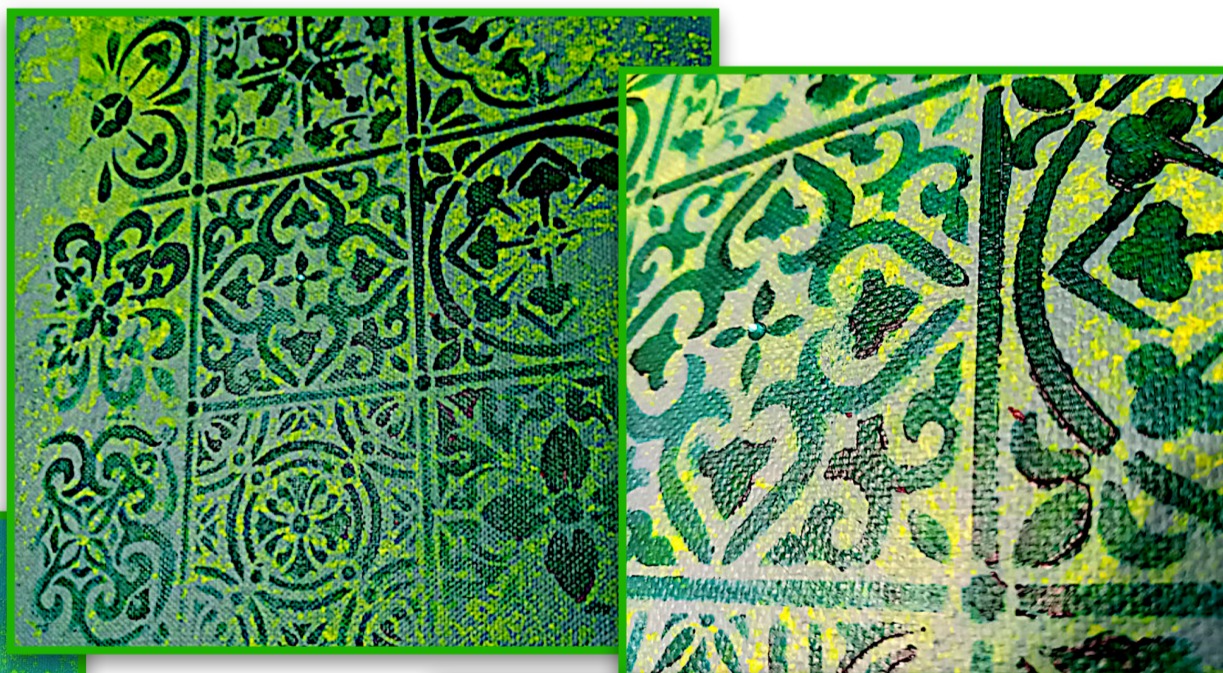
**29,5cm x 25cm**

**Medium:**

**Mixed media on canvas**

**Donation:**

**45,00 Euros**



Tina McEvoy  
visual artist

